

# Dispensers & holders overview



## Suction cups position options

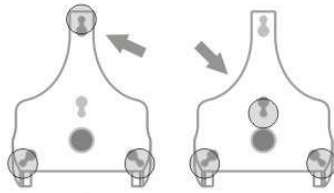


Table Counter

### Standard Red dispenser

**Item code: I000053**

Standard colors available: Red, Lime Green and Black. For other colors please ask.

Aluminum tube



28cm or 40 cm

**IFB**  
Item code, 40 cm:  
**I000005**

Item code, 28 cm:  
**I000003**



Aluminum tube

**HPF**  
Horizontal  
Plastic Fixed  
for Counters  
Item code:  
**I000060**

Total height: 40 cm.  
(from the base up to  
the dispenser bottom)  
Base diameter: 15 cm. x 15 cm.

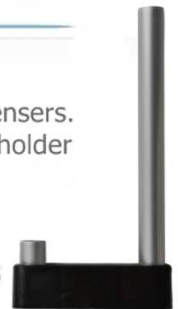
**IF**  
Inclined  
Fixed for  
Inclined Counters  
Item code:  
**I000039**



28°

Adapter for two dispensers.  
Compatible with any holder

**BMD**  
Double Support  
Item code: **I000043**



**VHR**  
Vertical  
Horizontal  
Item code: **I000115**



**IFX**  
Item code: **I000042**

To display between  
angled fruit and  
vegetable crates

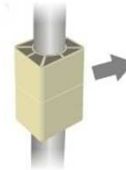


**PF**  
Wall display  
Item code: **I000006**



**Adapter sleeve  
for Floor Display**

Height extension  
Sleeve + Aluminum  
tube



**PMO**  
Floor Display  
Item code: **I000007**

Total height: 84 cm.  
(from the floor up to  
the dispenser bottom)  
Base diameter: 36 cm.

